

**A Space Center Property**



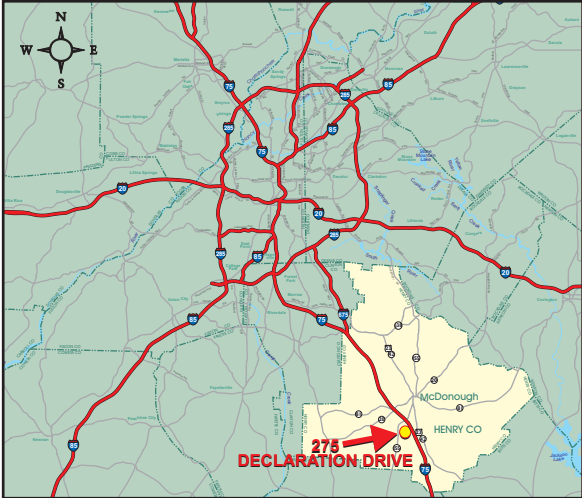
**Key Distances:**

I-285	22 miles
ATL Airport	28 miles
CSX Intermodal	36 miles
<b>Seaports</b>	
Charleston	312 miles
Jacksonville	316 miles
Savannah	218 miles

**Liberty Industrial Park**



**275 Declaration Drive  
McDonough, GA 30253**



**SPACE CENTER**

**JIM RYDEN**  
**770-551-9940**  
[jryden@spacecenterinc.com](mailto:jryden@spacecenterinc.com)

# SPECIFICATIONS

## H3 Building

Size	.....75,600 SF
Office	.....None
Air Conditioned	.....100%
Dimensions	.....180' x 420'
Dock Doors	.....4 - 9' x 10'
Drive-in Doors	.....None
Clear Height	.....25' (drop ceiling)
Column Spacing	.....60' x 50'
Electric	.....1,200 amps
Lighting	.....T5
Fire System	......65gpm/5k SF
Roof	.....TPO

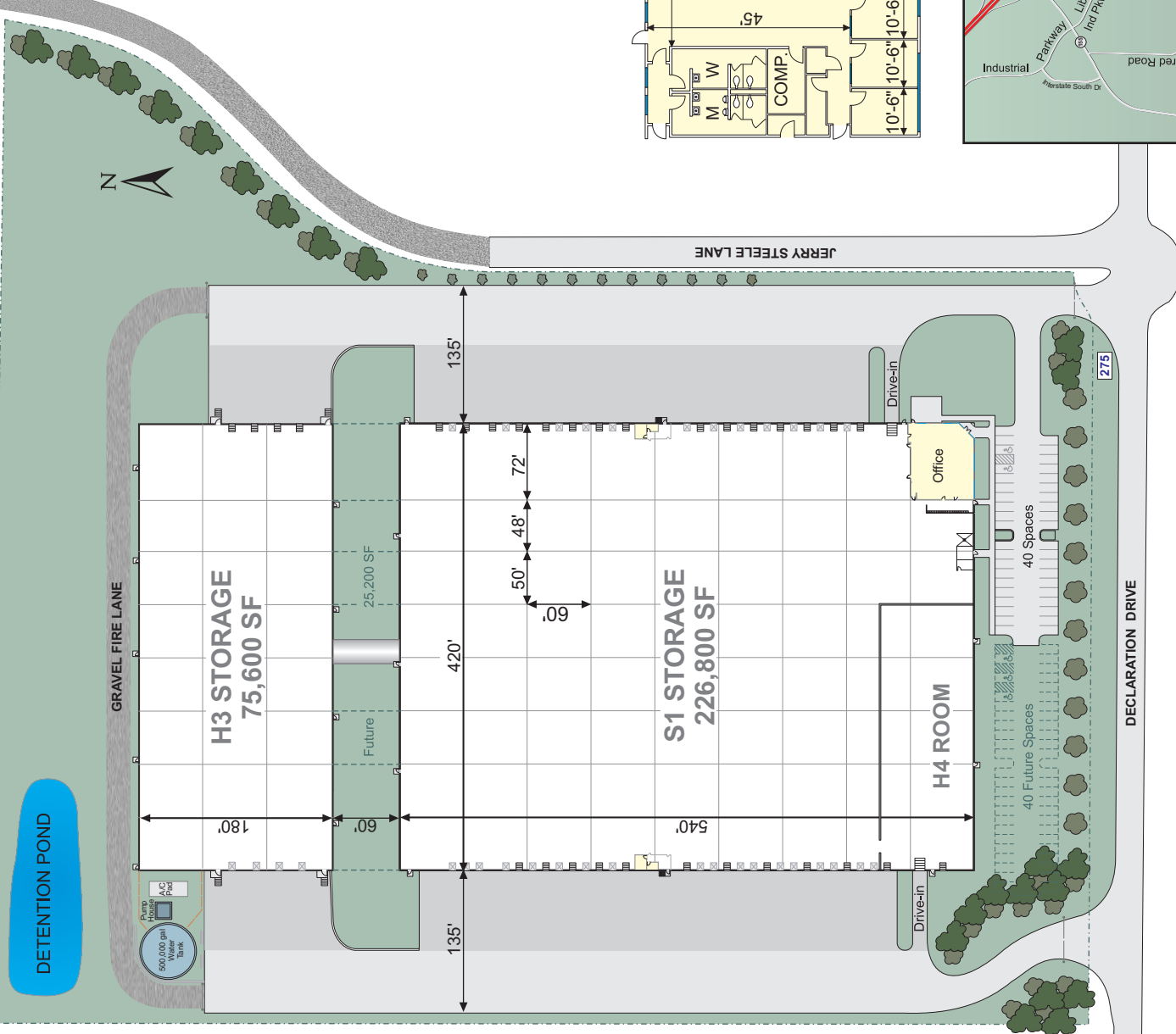
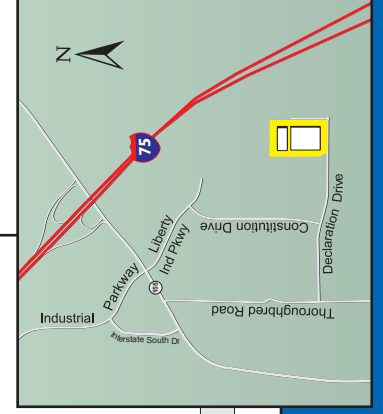
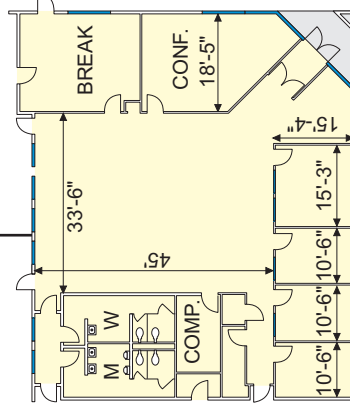
## S1 Building

Size	.....226,800 SF
Office	.....4,320 SF
H4 Room	.....22,500 SF
Dimensions	.....540' x 420'
Dock Doors	.....26 - 9' x 10'
Drive-in Doors	.....2 - 12' x 14'
Clear Height	.....30'
Column Spacing	.....60' x 50'
Electric	.....2,000 amps
Lighting	.....400w MH
Fire System	.....ESFR
Roof	.....Ballasted EPDM
Truck Courts	.....135'
Car Parking Spaces	.....40
Expansion	.....25,200 SF

Park	.....Liberty Industrial Park
Protective Covenants	.....Yes
Municipality	.....Henry County
Zoning	....."M-1" (Light Industrial)
Site	.....18.0 Acres

## OFFICE LAYOUT



## CONTACT

**JIM RYDEN**  
770-551-9940

[jryden@spacecenterinc.com](mailto:jryden@spacecenterinc.com)



SPACE CENTER

275 Declaration Drive, McDonough, Georgia 30253