

A Space Center Property



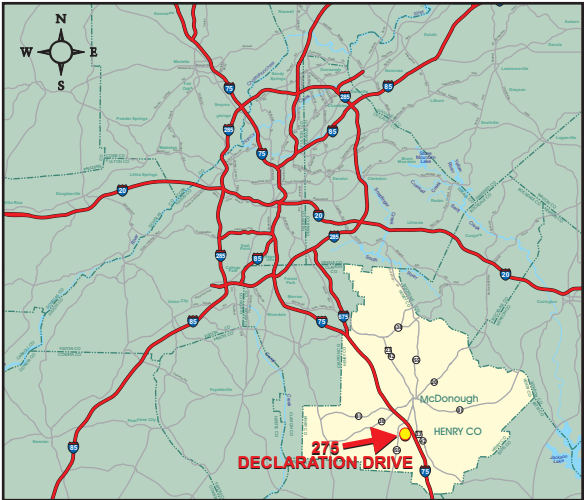
Key Distances:

I-285	22 miles
ATL Airport	28 miles
CSX Intermodal	36 miles
Seaports	
Charleston	312 miles
Jacksonville	316 miles
Savannah	218 miles

Liberty Industrial Park



**275 Declaration Drive
McDonough, GA 30253**



SPACE CENTER

JIM RYDEN
770-551-9940
jryden@spacecenterinc.com

SPECIFICATIONS

H3 Building

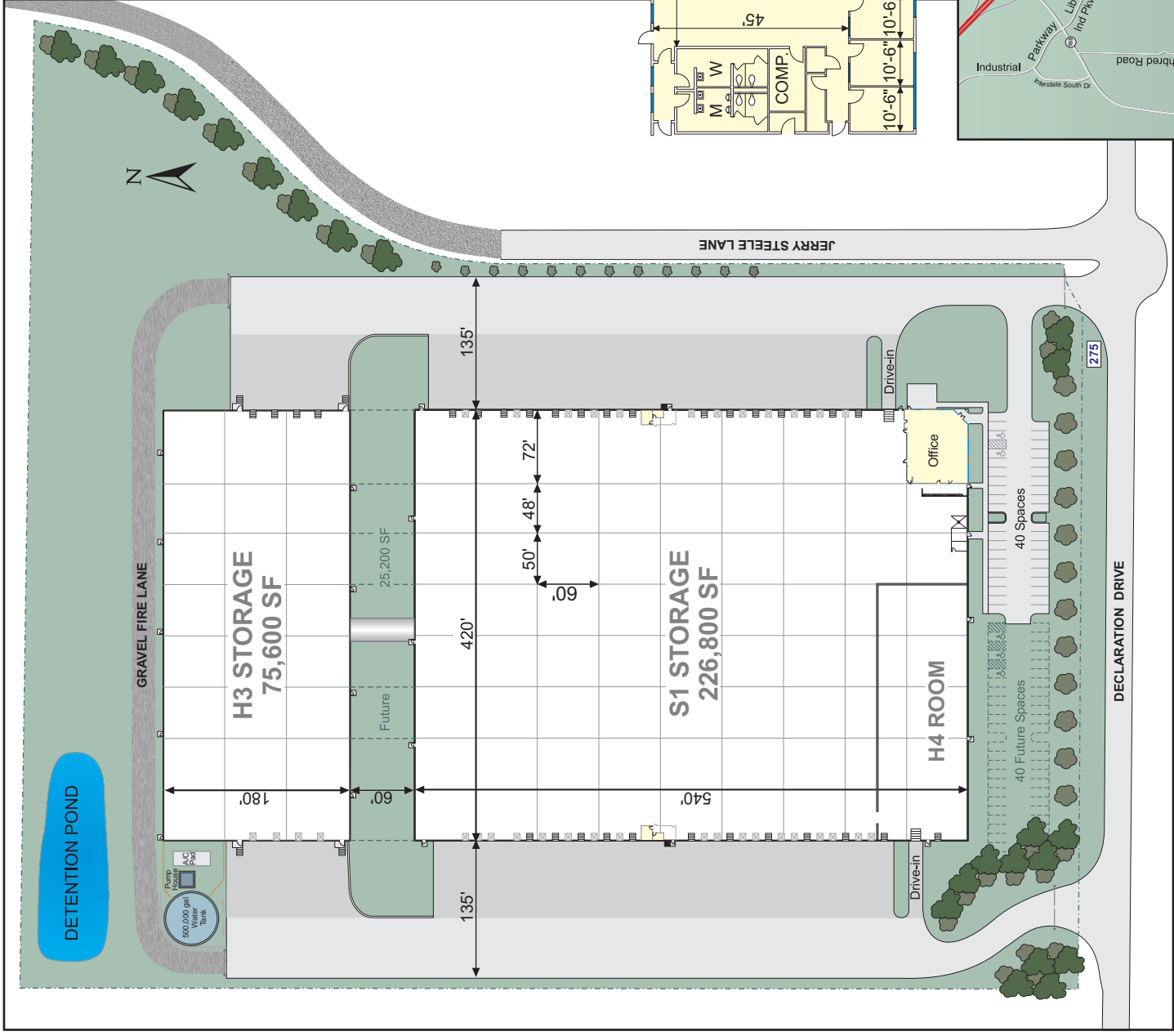
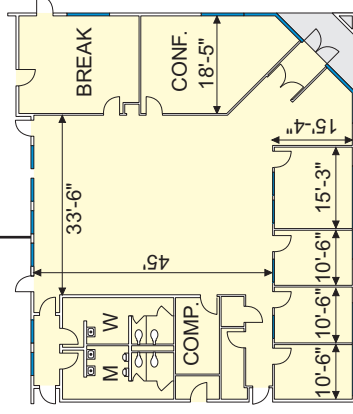
Size	75,600 SF
Office	None
Air Conditioned	100%
Dimensions	180' x 420'
Dock Doors	4 - 9' x 10'
Drive-in Doors	None
Clear Height ...25' (drop ceiling)	
Column Spacing	60' x 50'
Electric	1,200 amps
Lighting	T5
Fire System65gpm/5k SF
Roof	TPO

S1 Building

Size	226,800 SF
Office	4,320 SF
H4 Room	22,500 SF
Dimensions	540' x 420'
Dock Doors	26 - 9' x 10'
Drive-in Doors	2 - 12' x 14'
Clear Height	30'
Column Spacing	60' x 50'
Electric	2,000 amps
Lighting	400w MH
Fire System	ESFR
Roof	Ballasted EPDM
Truck Courts	135'
Car Parking Spaces	40
Expansion	25,200 SF

Park	Liberty Industrial Park
Protective Covenants	Yes
Municipality	Henry County
Zoning ...	"M-1" (Light Industrial)
Site	18.0 Acres

OFFICE LAYOUT



CONTACT

JIM RYDEN
770-551-9940

ryden@spacecenterinc.com



SPACE CENTER

275 Declaration Drive, McDonough, Georgia 30253